

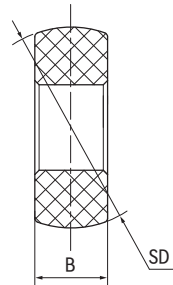
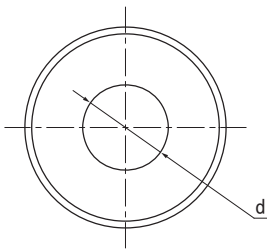
BAL金属关节轴承座球体 Spherical balls for metal bearing housings



产品特性 Product features

- 高负载关节轴承解决方案
- 标准球体材料EPB13,
可选: FDA等级球体EPB6、高温250°C球体EPB10
- 免维护、自润滑
- 适用于各种金属轴承座
- 抗冲击
- 耐腐蚀
- 无噪音、重量轻
- High load spherical ball solutions
- Standard ball material EPB13
available FDA grade material EPB6 or 250°C material EPB10
- Self-lubricated and maintenance free
- For various metal bearing housings
- Vibration dampening
- Good chemical resistance
- No noise and light weight

标准规格 Standard specifications



产品编码 Part No.:

BAL-20-17-EPB13

材料 Material

宽度 Width

内径 Inner diameter

标准材料EPB13球体 Standard material EPB13 balls

产品编码 Part No.	d [mm]	d公差 Tolerance [mm]	SD ⁰ _{-0.05} [mm]	B [mm]	最大静态径向抗压强度 Max. radial static compressive strength [KN]	最大静态轴向抗拉强度 Max. axial static tensile strength [KN]	重量 Weight [g]
BAL-17-17-EPB13	17	+0.032/+0.102	47	17	10.0	7.5	36
BAL-20-14-EPB13	20	+0.040/+0.124	47	14	9.5	5.0	30
BAL-20-17-EPB13	20	+0.040/+0.124	47	17	11.5	7.5	34
BAL-25-15-EPB13	25	+0.040/+0.124	52	15	13.0	5.5	35
BAL-25-17-EPB13	25	+0.040/+0.124	52	17	14.5	7.5	39
BAL-30-16-EPB13	30	+0.040/+0.124	62	16	16.5	6.5	53

产品编码 Part No.	d [mm]	d公差 Tolerance [mm]	$SD_{-0.05}^0$ [mm]	B [mm]	最大静态径向抗压强度 Max. radial static compressive strength [KN]	最大静态轴向抗拉强度 Max. axial static tensile strength [KN]	重量 Weight [g]
BAL-30-19-EPB13	30	+0.040/+0.124	62	19	19.5	9.5	62
BAL-35-17-EPB13	35	+0.050/+0.150	72	17	20.5	7.5	76
BAL-35-20-EPB13	35	+0.050/+0.150	72	20	24.0	10.5	89
BAL-40-18-EPB13	40	+0.050/+0.150	80	18	25.0	8.5	98
BAL-40-21-EPB13	40	+0.050/+0.150	80	21	29.0	12.0	114

FDA等级材料EPB6球体 FDA grade material EPB6 balls

产品编码 Part No.	d [mm]	d公差 Tolerance [mm]	$SD_{-0.05}^0$ [mm]	B [mm]	最大静态径向抗压强度 Max. radial static compressive strength [KN]	最大静态轴向抗拉强度 Max. axial static tensile strength [KN]	重量 Weight [g]
BAL-17-17-EPB6	17	+0.032/+0.102	47	17	10.0	7.5	36
BAL-20-14-EPB6	20	+0.040/+0.124	47	14	9.5	5.0	30
BAL-20-17-EPB6	20	+0.040/+0.124	47	17	11.5	7.5	34
BAL-25-15-EPB6	25	+0.040/+0.124	52	15	13.0	5.5	35
BAL-25-17-EPB6	25	+0.040/+0.124	52	17	14.5	7.5	39
BAL-30-16-EPB6	30	+0.040/+0.124	62	16	16.5	9.5	53
BAL-30-19-EPB6	30	+0.040/+0.124	62	19	19.5	9.5	62

高温材料EPB10球体 High temperature material EPB10 balls

产品编码 Part No.	d [mm]	d公差 Tolerance [mm]	$SD_{-0.05}^0$ [mm]	B [mm]	最大静态径向抗压强度 Max. radial static compressive strength [KN]	最大静态轴向抗拉强度 Max. axial static tensile strength [KN]	重量 Weight [g]
BAL-17-17-EPB10	17	+0.032/+0.102	47	17	36.0	26.0	36
BAL-20-14-EPB10	20	+0.040/+0.124	47	14	35.0	18.0	30
BAL-20-17-EPB10	20	+0.040/+0.124	47	17	42.5	26.0	34
BAL-25-15-EPB10	25	+0.040/+0.124	52	15	46.5	20.0	35
BAL-25-17-EPB10	25	+0.040/+0.124	52	17	53.0	26.5	39
BAL-30-16-EPB10	30	+0.040/+0.124	62	16	60.0	23.0	53
BAL-30-19-EPB10	30	+0.040/+0.124	62	19	71.0	32.5	62
BAL-35-17-EPB10	35	+0.050/+0.150	72	17	74.0	27.0	76
BAL-35-20-EPB10	35	+0.050/+0.150	72	20	87.5	37.0	89
BAL-40-18-EPB10	40	+0.050/+0.150	80	18	90.0	30.0	98
BAL-40-21-EPB10	40	+0.050/+0.150	80	21	105.0	41.0	114

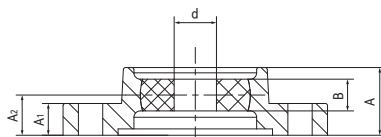
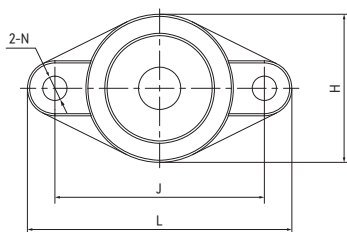
SFL法兰关节轴承 Flange spherical bearings



产品特性 Product features

- 从UC204到UC208
 - 标准耐磨材料EPB13球体
可选: FDA等级球体EPB6、高温250°C球体EPB10
 - 不锈钢基座带有2个固定孔
 - 自润滑免维护
 - 高负载
 - 耐脏污
- UC204 up to UC208
 - Standard anti-wear composite EPB13 balls
available FDA grade material EPB6 or 250°C material EPB10
 - Stainless steel housing with 2 mounting holes
 - Maintenance-free dry operation
 - High load
 - Resistant to dirt

标准规格 Standard specifications



产品编码 Part No.:

SFL204-20-17-EPB13

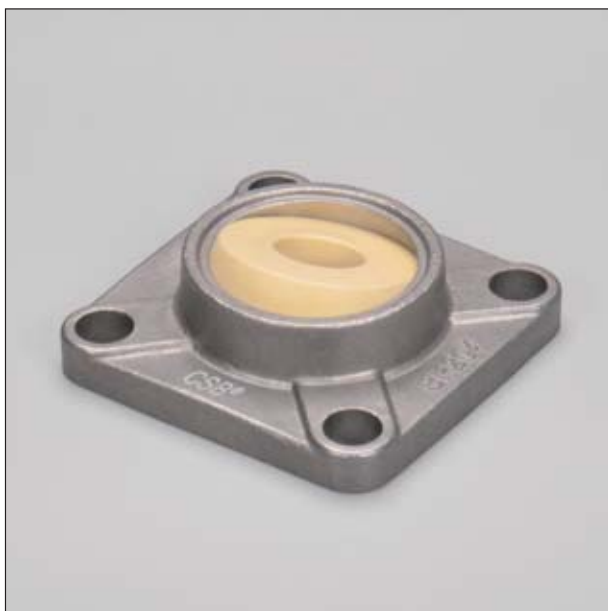
材料 Material

宽度 Width

内径 Inner diameter

产品编码 Part No.	d [mm]	d公差 Tolerance [mm]	B ^{+0.1} [mm]	A [mm]	A ₁ [mm]	A ₂ [mm]	H [mm]	N [mm]	J [mm]	L [mm]	最大静态径向 抗压强度 Max. radial static compressive strength [KN]	最大静态轴向 抗拉强度 Max. axial static tensile strength [KN]	最大调节 角度 Max. pivot angle	重量 Weight [g]
SFL204-20-17-EPB13	20	+0.040/+0.124	17	25	11	15	56	12	90	108	11.5	7.5	19°	204
SFL205-25-17-EPB13	25	+0.040/+0.124	17	26	13	16	63	16	99	121	14.5	7.5	15°	279
SFL206-30-19-EPB13	30	+0.040/+0.124	19	30	13	18	74	16	117	141	19.5	9.5	15°	402
SFL207-35-20-EPB13	35	+0.050/+0.150	20	34	15	19	90	16	130	161	24.0	10.5	16°	600
SFL208-40-21-EPB13	40	+0.050/+0.150	21	36	15	21	100	16	144	175	29.0	12.0	15°	800

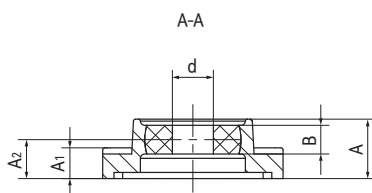
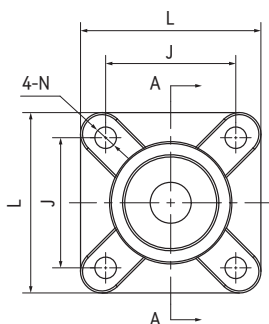
SF法兰关节轴承 Flange spherical bearings



产品特性 Product features

- 从UC204到UC208
 - 标准耐磨材料EPB13球体
可选: FDA等级球体EPB6、高温250°C球体EPB10
 - 不锈钢基座带有4个固定孔
 - 自润滑免维护
 - 高负载
 - 耐脏污
-
- UC204 up to UC208
 - Standard anti-wear composite EPB13 balls
available FDA grade material EPB6 or 250°C material EPB10
 - Stainless steel housing with 4 mounting holes
 - Maintenance-free dry operation
 - High load
 - Resistant to dirt

标准规格 Standard specifications



产品编码 Part No.:

SF204-20-17-EPB13

材料 Material

宽度 Width

内径 Inner diameter

产品编码 Part No.	d [mm]	d公差 Tolerance [mm]	B _{±0.1} [mm]	A [mm]	A ₁ [mm]	A ₂ [mm]	N [mm]	J [mm]	L [mm]	最大静态径向 抗压强度 Max. radial static compressive strength [kN]	最大静态轴向 抗拉强度 Max. axial static tensile strength [kN]	最大调节 角度 Max. pivot angle	重量 Weight [g]
SF204-20-17-EPB13	20	+0.040/+0.124	17	25	11	15	12	64	83	11.5	7.5	19°	294
SF205-25-17-EPB13	25	+0.040/+0.124	17	26	13	16	12	70	90	14.5	7.5	15°	379
SF206-30-19-EPB13	30	+0.040/+0.124	19	29	13	18	12	83	103	19.5	9.5	15°	502
SF207-35-20-EPB13	35	+0.050/+0.150	20	34	15	19	14	92	117	24.0	10.5	16°	700
SF208-40-21-EPB13	40	+0.050/+0.150	21	36	15	21	16	102	130	29.0	12.0	15°	900

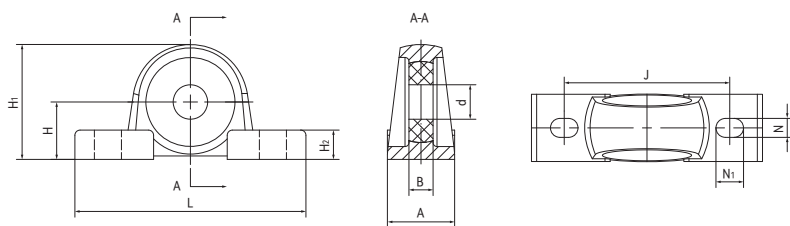
SP关节轴承座 Spherical bearing housing



产品特性 Product features

- 从UC204到UC208
 - 标准耐磨材料EPB13球体
可选: FDA等级球体EPB6、高温250°C球体EPB10
 - 不锈钢基座带有2个固定孔
 - 自润滑免维护
 - 高负载
 - 耐脏污
- UC204 up to UC208
 - Standard anti-wear composite EPB13 balls
available FDA grade material EPB6 or 250°C material EPB10
 - Stainless steel housing with 2 mounting holes
 - Maintenance-free dry operation
 - High load
 - Resistant to dirt

标准规格 Standard specifications



产品编码 Part No.:

SP204-20-17-EPB13

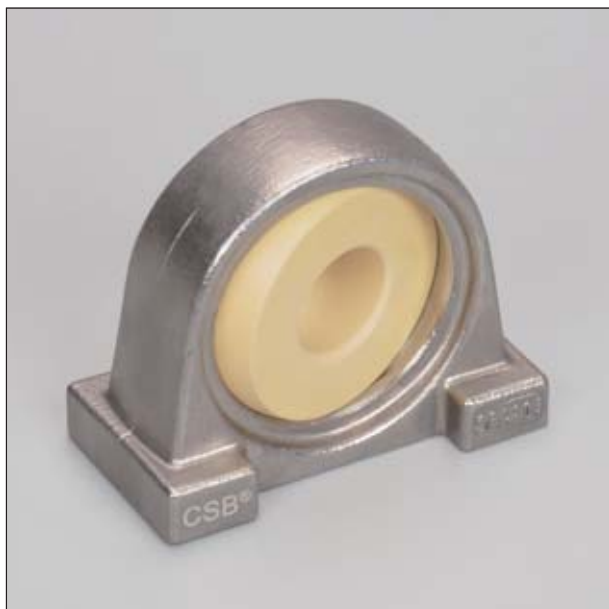
材料 Material

宽度 Width

内径 Inner diameter

产品编码 Part No.	d [mm]	d公差 Tolerance [mm]	B _{±0.1} [mm]	A [mm]	H [mm]	H ₁ [mm]	H ₂ [mm]	N [mm]	N ₁ [mm]	J [mm]	L [mm]	最大静态径向 抗压强度 Max. radial static compressive strength [KN]	最大静态轴向 抗拉强度 Max. axial static tensile strength [KN]	最大调 节角度 Max. pivot angle	重量 Weight [g]
SP204-20-17-EPB13	20	+0.040/+0.124	17	33	33.3	63	11	13	19	95	125	11.5	7.5	19°	284
SP205-25-17-EPB13	25	+0.040/+0.124	17	36	36.5	68	13	13	19	105	133	14.5	7.5	15°	339
SP206-30-19-EPB13	30	+0.040/+0.124	19	42	42.9	80	15	17	23	121	155	19.5	9.5	15°	522
SP207-35-20-EPB13	35	+0.050/+0.150	20	48	47.9	93	18	17	23	127	167	24.0	10.5	16°	800
SP208-40-21-EPB13	40	+0.050/+0.150	21	54	49.2	106	18	17	23	137	184	29.0	12.0	15°	1100

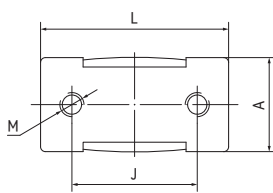
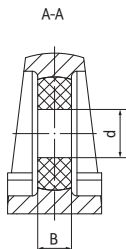
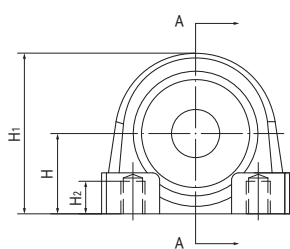
SPA关节轴承座 Spherical bearing housings



产品特性 Product features

- 从UC204到UC208
 - 标准耐磨材料EPB13球体
可选: FDA等级球体EPB6、高温250°C球体EPB10
 - 不锈钢基座带有2个固定孔
 - 自润滑免维护
 - 高负载
 - 耐脏污
- UC204 up to UC208
 - Standard anti-wear composite EPB13 balls
available FDA grade material EPB6 or 250°C material EPB10
 - Stainless steel housing with 2 mounting holes
 - Maintenance-free dry operation
 - High load
 - Resistant to dirt

标准规格 Standard specifications



产品编码 Part No.:

SPA204-20-17-EPB13

材料 Material

宽度 Width

内径 Inner diameter

产品编码 Part No.	d [mm]	d公差 Tolerance [mm]	B _{+0.1} [mm]	A [mm]	M [mm]	H [mm]	H ₁ [mm]	H ₂ [mm]	J [mm]	L [mm]	最大静态径向 抗压强度 Max. radial static compressive strength [KN]	最大静态轴向 抗拉强度 Max. axial static tensile strength [KN]	最大调 节角度 Max. pivot angle	重量 Weight [g]
SPA204-20-17-EPB13	20	+0.040/+0.124	17	35	M10x1.5	30.2	60	11	52	72	11.5	7.5	19°	134
SPA205-25-17-EPB13	25	+0.040/+0.124	17	37	M10x1.5	36.5	71	12	56	79	14.5	7.5	15°	529
SPA206-30-19-EPB13	30	+0.040/+0.124	19	44	M14x2	42.9	82	13	66	89	19.5	9.5	15°	642
SPA207-35-20-EPB13	35	+0.050/+0.150	20	48	M14	47.6	95	20	80	110	24.0	10.5	16°	850
SPA208-40-21-EPB13	40	+0.050/+0.150	21	54	M14	49.2	100	20	84	116	29.0	12.0	15°	1000

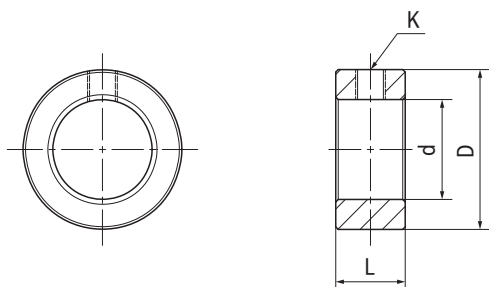
LR锁紧环 Locking rings



产品特性 Product features

- 尺寸范围: 20mm, 25mm, 30mm, 35mm, 40mm
 - 标准材料: 镀锌钢, 可选不锈钢与铝合金
 - 配合关节轴承座
 - 带锁紧螺钉
- Dimension range: 20mm, 25mm, 30mm, 35mm, 40mm
 - Standard material: Galvanized steel
available material: stainless steel and aluminum alloy
 - Used with spherical bearings
 - With locking screw

标准规格 Standard specifications



产品编码 Part No.:

LR-20-32-14-C

C: 镀锌钢 Galvanized steel
A: 铝合金 Aluminum alloy
E: 不锈钢 Stainless steel

宽度 Width

外径 Outside diameter

内径 Inner diameter

产品编码 Part No.	d H7 [mm]	D [mm]	L [mm]	K [mm]	重量 Weight [g]
LR-20-32-14-C	20	32	14	M6	54
LR-25-40-16-C	25	40	16	M8	96
LR-30-45-16-C	30	45	16	M8	111
LR-35-56-16-C	35	56	16	M8	187
LR-40-63-18-C	40	63	18	M10	261
LR-20-32-14-E	20	32	14	M6	54
LR-25-40-16-E	25	40	16	M8	96
LR-30-45-16-E	30	45	16	M8	111
LR-35-56-16-E	35	56	16	M8	187
LR-40-63-18-E	40	63	18	M10	261

产品编码 Part No.	d H7 [mm]	D [mm]	L [mm]	K [mm]	重量 Weight [g]
LR-20-32-10-A	20	32	10	M6	13
LR-25-38-12-A	25	40	12	M8	21
LR-30-46-15-A	30	45	15	M8	39
LR-35-50-15-A	35	50	15	M8	41
LR-40-60-20-A	40	60	20	M10	85